

Employer Supported Volunteering for local businesses



MAKING **COMMUNITY** YOUR **BUSINESS**

FOR BUSINESSES

Lincolnshire Community & Voluntary Service (LCVS) are working to develop stronger links between the Voluntary Sector and local businesses.

There are many ways we would like to do this, including better communications and volunteering through our Volunteer Centre.

Please contact us to find out more at enquiry@lincolnshirecvs.org.uk.



Volunteer Centres
Lincolnshire





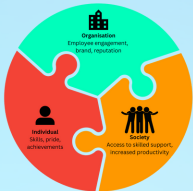
We promote the wide-ranging benefits of volunteering through our four accredited Volunteer Centres, matching would-be volunteers with opportunities and supporting volunteer involving organisations to recruit, train and retain volunteers.

What is Employer Supported Volunteering (ESV)?

This really is what it says on the tin! Employers take positive actions to support their workers to enable them to volunteer in the local community in types of volunteering that are consistent with the values of the organisation.

This can be done in many different ways:

- Encouraging your employees to volunteer by giving them a set number of hours each year where they can volunteer and they still get paid
- Consulting with your employees to adopt a charity of the year and support fundraising efforts at work and outside of work
- Working with a local charity to provide them with a team of volunteers to undertake a particular task such as supporting an event, gardening or decorating
- Allowing employees to undertake small tasks at work on behalf of a charity such as designing a poster or photocopying leaflets
- Being flexible with working hours so employees can volunteer in their own time - for example to attend a Trustee meeting or cover a session on a crisis help line



The Benefits

For your business:

Apart from doing lots of good in your local community by supporting your employees to volunteer, you can do lots of good for staff morale, your reputation as an employer and address your businesses commitment to Social Responsibility.

Research by Great Place to Work <https://www.greatplacetowork.co.uk/> has shown that employer supported volunteering:

- Improves employee retention
- Creates pride in where they work and increased employer brand awareness
- Increases employee empowerment
- Creates stronger more connected teams
- Enables new skills
- Has the ability to uncover future leaders
- Produces happier, healthier staff

For Individuals:

- Increase their confidence and skills outside of the workplace
- Increased sense of pride and satisfaction
- Ability to give time to support and engage with their community

For Charities and Community Organisations:

- Access to skilled workforce
- Helps to reduce costs



A charity in East Lindsey needed a large number of trees planting. A local business allowed 20 members of staff time out of work on one day to plant the trees. This was a good team building activity, whilst having fun and helping a good cause!

Getting involved

Initially we suggest that you check out if your business has already made connections with local charities or community groups and if so, decide if you want to develop these further or are you open to looking at other good causes in your area.

- Consult with your staff – what are their ideas?
- Contact your local LCVS Officer to find out what opportunities there are to support charities and groups in your area – they know the local community and voluntary sector well and will work to find an opportunity that fits with your brief.
- Could you set up a team building exercise by arranging for some of your staff to undertake a task and finish piece of work for a local charity or group such as delivering leaflets, creating a garden, hosting a tea party etc.
- Could your suppliers get involved in any way too by sponsoring materials?

Lincolnshire Community and Voluntary Service (LCVS), cover Boston, South Holland, East Lindsey and South Kesteven. Our sister organisation, Voluntary Centre Services (VCS) cover North Kesteven, Lincoln and West Lindsey. We work closely together as we are commissioned by Lincolnshire County Council to deliver the same service. We are a brokerage service matching potential volunteers with placements, we advertise volunteering opportunities and will provide 1-1 support to introduce the volunteer to the placement to ensure a smooth transition and a positive start to the volunteering journey.

We deliver a Volunteer Management course for community organisations or anybody supporting volunteers to learn about best practice when supervising and working with volunteers.

We also offer support for community organisations to suit their needs. This is largely funding, governance, policies and procedures, volunteer recruitment and management etc.


We deliver a Funding Ready Programme to support groups in their applications for funding. The course takes representatives from organisations on a journey, starting with knowing where to look for funding to hopefully submitting a successful application. Alongside this we offer a funding surgery which is a 20 minute appointment with an experienced fundraiser to discuss funding ideas and opportunities. This is available to all community organisations.

In each district we have an Area Officer, their contact details are below for you to make further connections. The Area Officers have good geographical knowledge of the district and knowledge of local volunteers.



Get in touch

Boston Borough	Thelma Wadsley	thelmawadsley@lincolnshirecvs.org.uk
South Holland	Katy Gale Karel Middleton	katygale@lincolnshirecvs.org.uk karelmiddleton@lincolnshirecvs.org.uk
South Kesteven	Batul Dungarwalla Katy Gale	batuldungarwalla@lincolnshirecvs.org.uk katygale@lincolnshirecvs.org.uk
East Lindsey	Mandy Elmer Victoria Speak	mandyelmer@lincolnshirecvs.org.uk victoriaspeak@lincolnshirecvs.org.uk



Our Area Officers in Boston Borough, East Lindsey, South Holland and South Kesteven have good knowledge of the needs of the community and are well placed to find opportunities where volunteer support is needed.

Other Sources of Information

<http://www.lincolnshirecvs.org.uk/esv/>

<https://socialgoodconnect.org/culture-of-volunteering/>

[https://www.cjpd.co.uk/Images/employer-supported-volunteering-guide_tcm18-27612.pdf?msclkid=2089f30fb4e011ecb7d13317084cb36e#--:text=Employer%20supported%20volunteering%20\(E%20ESV\),opportunity%20provided%20by%20their%20company](https://www.cjpd.co.uk/Images/employer-supported-volunteering-guide_tcm18-27612.pdf?msclkid=2089f30fb4e011ecb7d13317084cb36e#--:text=Employer%20supported%20volunteering%20(E%20ESV),opportunity%20provided%20by%20their%20company)



Volunteer Centres
Lincolnshire

